

TUnIS Navigation Office

TUnIS Navigation Office provides the site office with real-time navigation and ring data from one or more TBMs. Thus, the navigation system can be directly monitored from the site office. The user may immediately analyse and document current as well as historical data.

All persons involved in the project, whether on the machine, in the site office or through remote connection, may track the tunnel building process in real-time.

The installed navigation software saves all data in a local database, which is continuously synchronised with the central database. Thus, it is ensured that the user in the site office always has the most recent data available. This is of vital importance for analysing the navigation and ring data.

If the database on the TBM is corrupt, this can be restored with the help of a backup of the office database. In the case of a total failure of the TBM computer, the TUnIS office computer can be used as a replacement.

Advice and competence from VMT

You won't be alone in the configuration and operation of TUnIS Office. We offer competent and continual support, with over 25 years' experience and more than 2,400 tunnelling projects successfully completed worldwide.



Benefits

Quick and convenient analyses

All analysis functions can be carried out from the TUnIS Office computer; the time-consuming trip to the TBM is no longer necessary

Minimised data loss and downtimes

Permanent database synchronisation allows the TUnIS Office computer to serve as a quick back-up solution for the TBM computer at any time

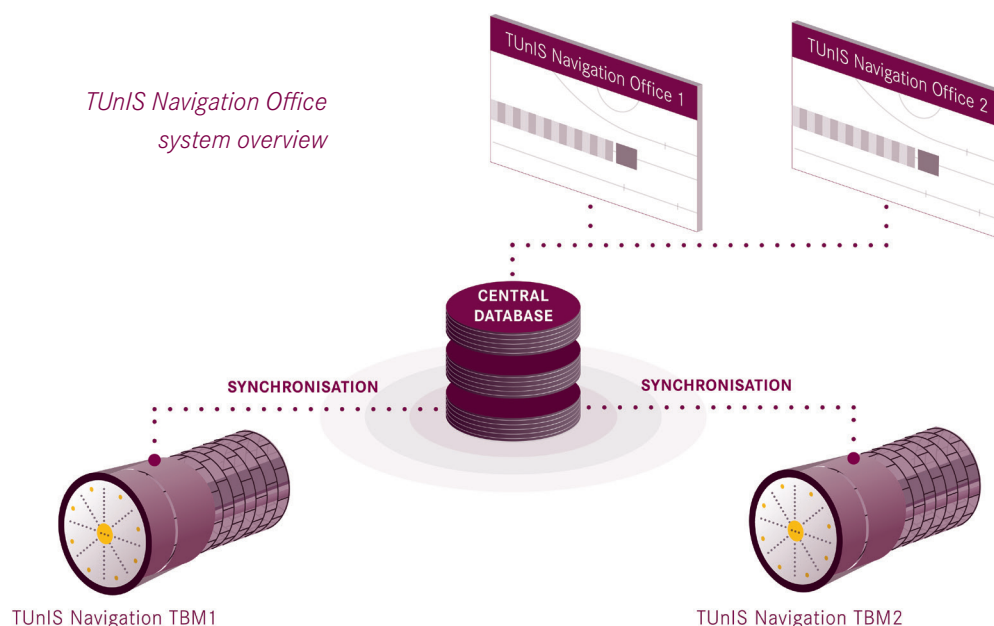
Support via remote dial-in

Thanks to internet access in the construction office, necessary support can be provided quickly, easily and cost-effectively on the office computer

Everything in view

TUnIS Office enables continuous monitoring and geo-referenced display of all project TBMs. In addition, calculation of the ring sequence enables optimal control of stock levels and segment production – right up until the end of the project

*TUnIS Navigation Office
system overview*



TUnIS Navigation Office

TUnIS Navigation Office can be used to access the entire functionality of the navigation system from the site office in real time without compromising the construction process.

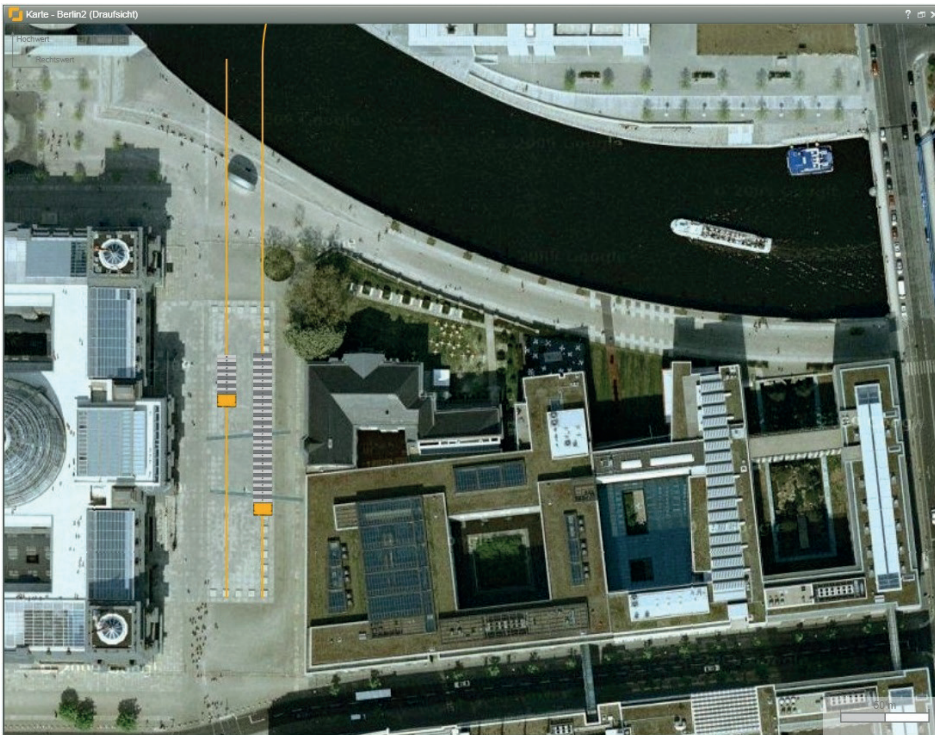
A message archive enables a rapid overview of the status of all system components as well as the navigation system. Online access allows VMT support to provide instant help.

The communication with the TUnIS navigation systems and the site network is managed by the VMT office computer. Multiple TUnIS Office instances can be running on the network at the same time. Read and edit privileges are specified in the user administration.



Features

- ▣ Monitoring of navigation system from the site office
- ▣ Real-time visualisation
- ▣ Analysis of navigation and ring data
- ▣ Data synchronisation in the site office
- ▣ Documentation / records



“Map” module

VMT Germany | Headquarters
 t +49 7251 9699 0
info@vmt-gmbh.de
www.vmt-gmbh.de

VMT China | t +86 21 50750276 | info@vmt-china.com | www.vmt-china.com
VMT Australia | t +61 1300 553 905 | info@vmt-tg.com.au
VMT USA | t +1 253 447 2399 | info@vmt-us.com
VMT Russia | t +7 812 677 79 74 | info@vmt-iiit.ru
VMT Singapore | t +65 659 057 19 | info@vmt-singapore.com
VMT India | t +91 987 129 22 00 | info@vmt-india.com
VMT Spain | t +34 91 359 8008 | info@vmt-spain.com

